

**COMMISSIONERS**

Jimmy Dimora  
Timothy F. Hagan  
Peter Lawson Jones

Cuyahoga County Department of Children and Family Services  
Deborah Forkas, Director

# Summary Monthly Statistical Report

## June 2010

**Department of Children & Family Services, 3955 Euclid Ave., Cleveland, OH 44115 (216) 431-4500**

TDD: Ohio Relay Service # is 1-800-750-0750 {NOTE: For questions about this report, you may call (216) 881-4125}

**JUNE 2010 : DCFS SUMMARY MONTHLY STATISTICAL REPORT**

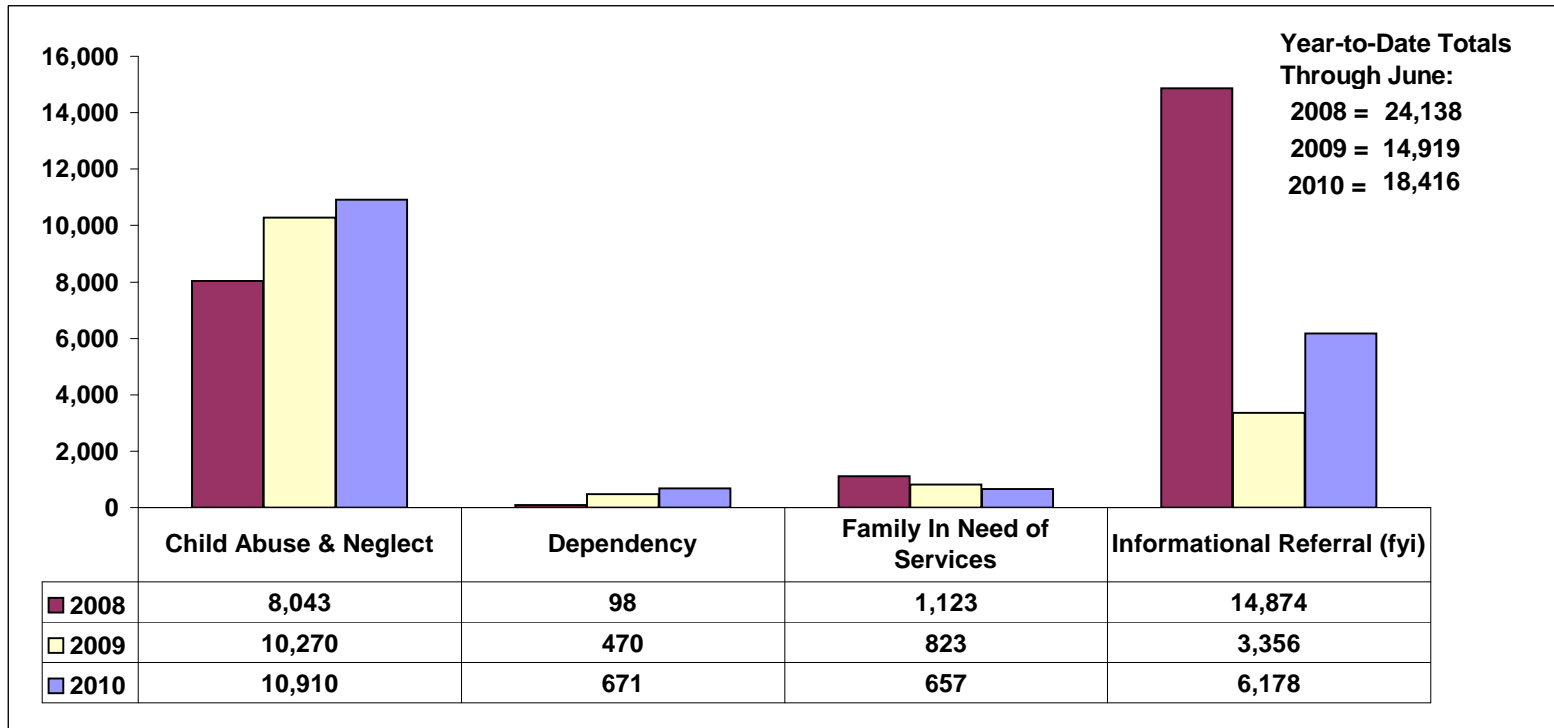
**TABLE OF CONTENTS**

INTAKES BY CATEGORY-----	1
SCREENED IN / SCREENED OUT INTAKES BY INTAKE CATEGORY-----	2
SCREENED IN CA/N INTAKES ( MULTIPLE ALLEGATIONS / NEGLECT / OTHER / PHYSICAL ABUSE)-----	3
SCREENED IN CA/N INTAKES (SEXUAL ABUSE) & SCREENED IN DEPENDENCY & FINS INTAKES-----	4
POSITIVE TOX REFERRALS-----	5
NEW CASE ASSIGNMENTS INTAKE-----	6
TOTAL CASE ASSIGNMENTS INTAKE-----	7
TOTAL CASE ASSIGNMENTS ONGOING-----	8
TOTAL CASE ASSIGNMENTS SPECIALIZED UNITS (MEDICAL INVESTIGATIONS / SEX ABUSE)-----	9
TOTAL CASE ASSIGNMENTS SPECIAL INVESTIGATIONS UNIT (SIU)-----	10
TOTAL CASE ASSIGNMENTS ADOPTIONS UNIT-----	11
TOTAL CASE ASSIGNMENTS INDEPENDENT LIVING / PERMANENT CUSTODY UNIT-----	12
TOTAL CASE ASSIGNMENTS INDEPENDENT LIVING / PL RESOURCES-----	13
TOTAL CASE ASSIGNMENTS RESOURCES / FOSTER HOMES ONGOING UNIT-----	14
TOTAL CASE ASSIGNMENTS RESOURCES / HOME STUDIES UNIT-----	15
TOTAL CASE ASSIGNMENTS RESOURCES INTERSTATE COMPACT UNIT-----	16
CUSTODY ENTRIES BY MONTH-----	17
CUSTODY ENTRIES BY RACE / GENDER / AGE-----	18
CUSTODY ENTRIES COMPARED TO CUSTODY TERMINATIONS-----	19
CUSTODY TRANSITIONS-----	20
CUSTODY TERMINATIONS BY TYPE-----	21
ADOPTIONS BY TYPE-----	22
CHILDREN IN PLACEMENT BY PLACEMENT TYPE-----	23
IN COUNTY / OUT-OF-COUNTY / OUT OF STATE PLACEMENTS-----	24
PERMANENT CUSTODY CHILDREN IN ADOPTIVE PLACEMENTS-----	25
PERMANENT CUSTODY CHILDREN BY AGE-----	26
CHILDREN AGING OUT OF CARE-----	27

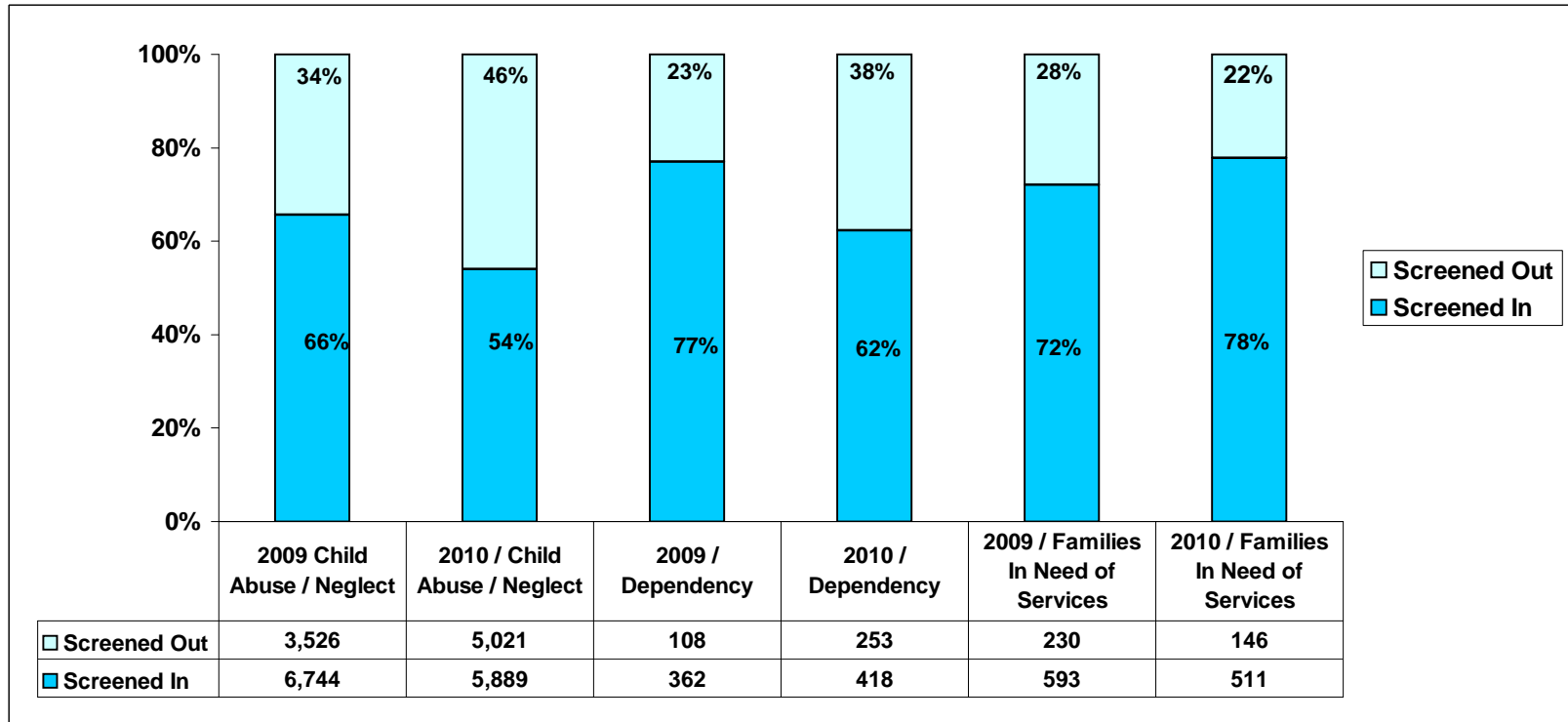
**ABOUT THIS REPORT:**

Except where noted the source for all data used in this report is the Ohio Statewide Automated Child Welfare Information System (SACWIS) as of the last day of the reporting period. CCDCFS converted to this system on December 9th of 2008. Prior to that date the source was the Cuyahoga County FACTS system. Within SACWIS data are categorized and collected differently making comparisons of SACWIS data to historic FACTS data impractical. In SACWIS both current and historical data may be subject to change as it is continually begin corrected and updated. This may cause statistics found in previous reports to be inconsistent with statistics found in more recent reports, even when the data pertains to the same time period.

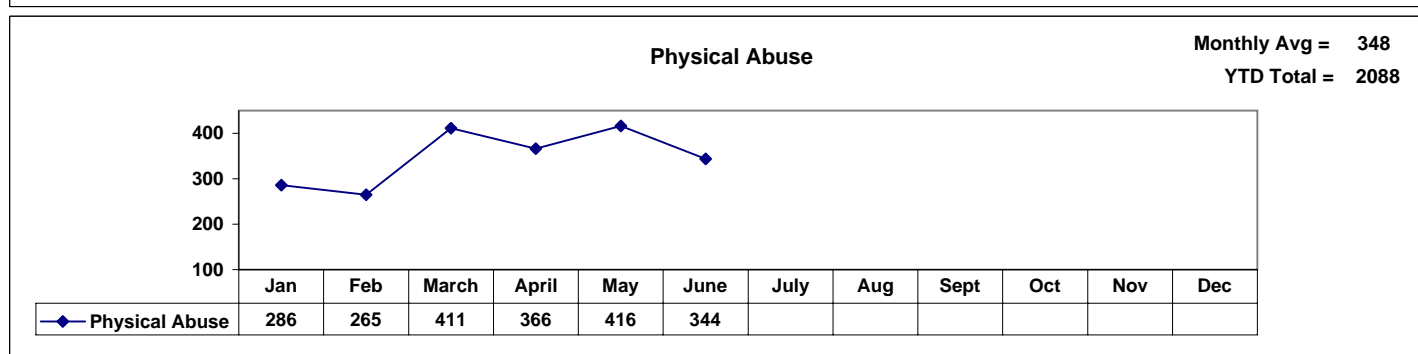
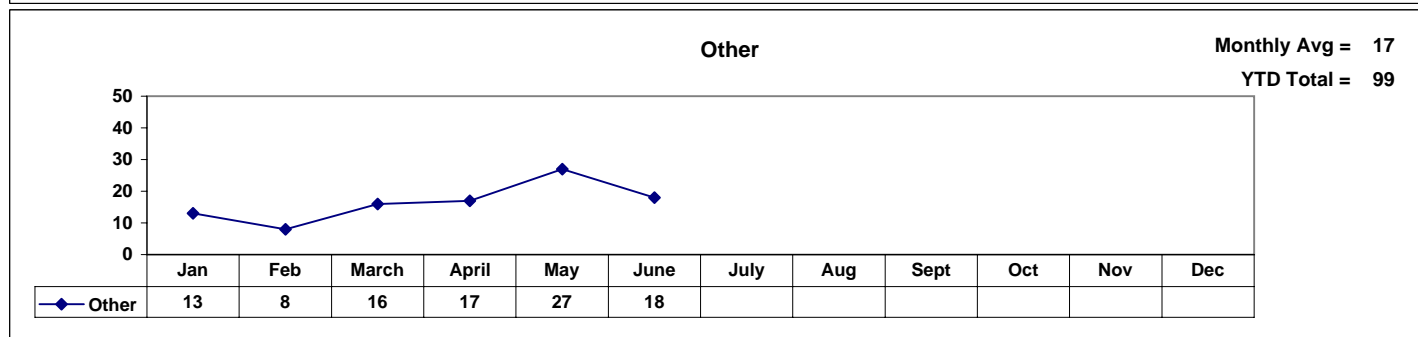
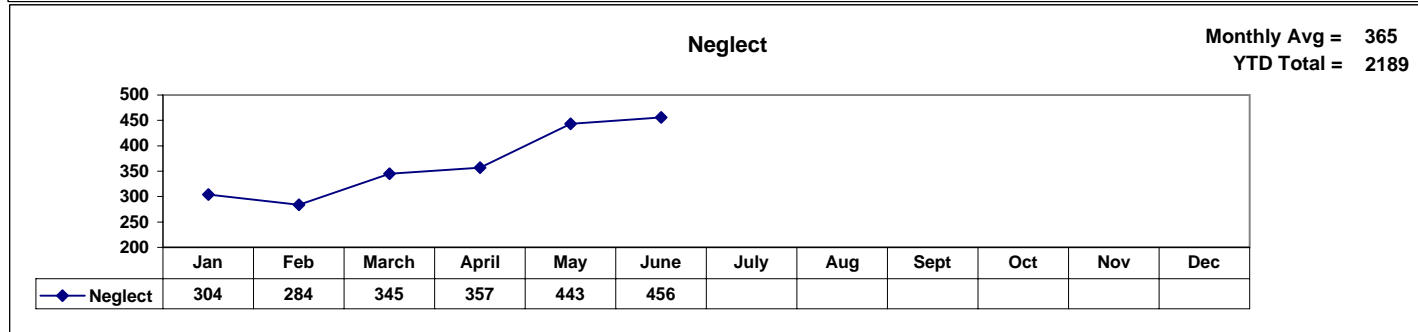
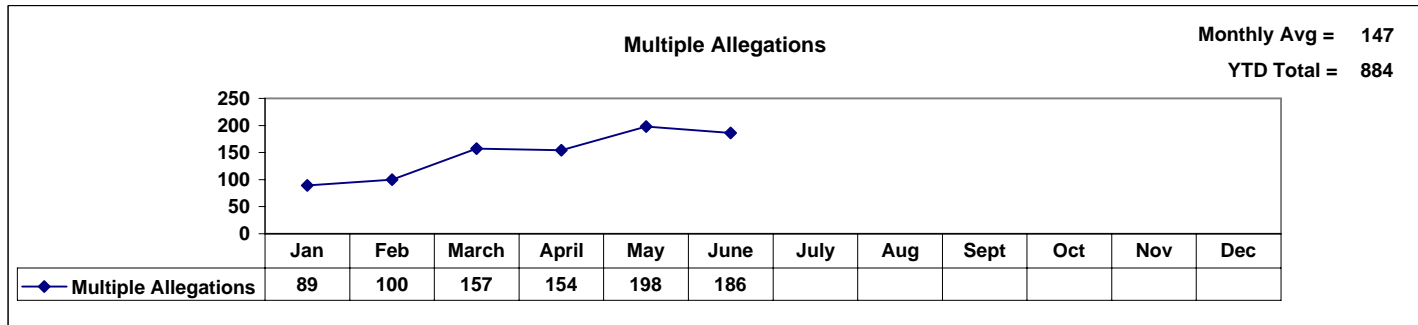
**INTAKES BY CATEGORY**  
**Year-To-Date June**  
**2008 / 2009 / 2010**



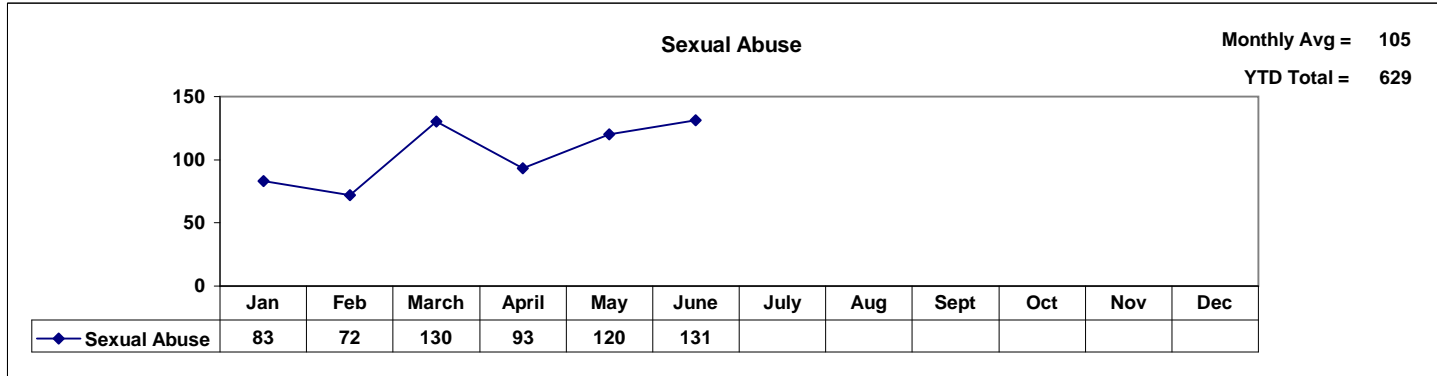
**SCREENED IN / SCREENED OUT INTAKES  
BY INTAKE CATEGORY 2009 - 2010 YTD**



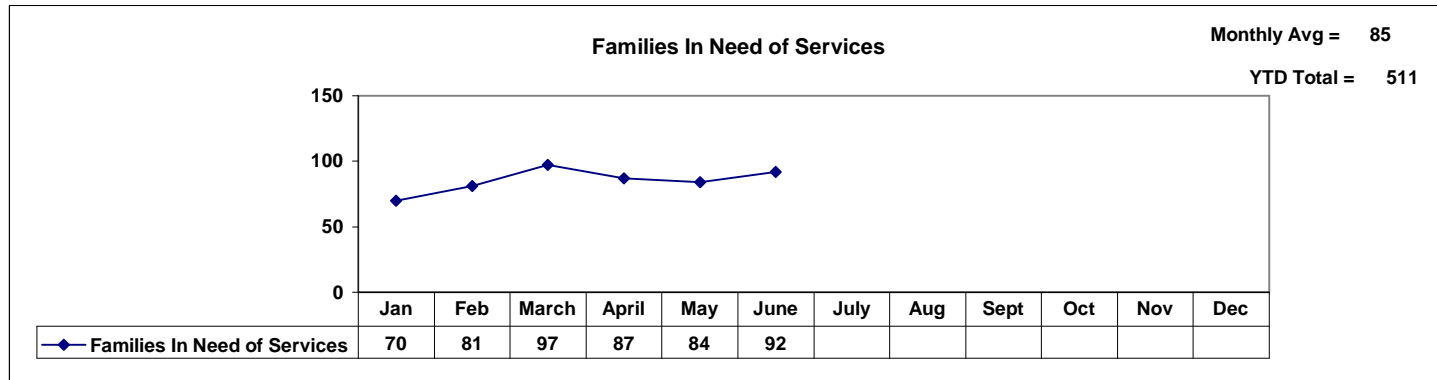
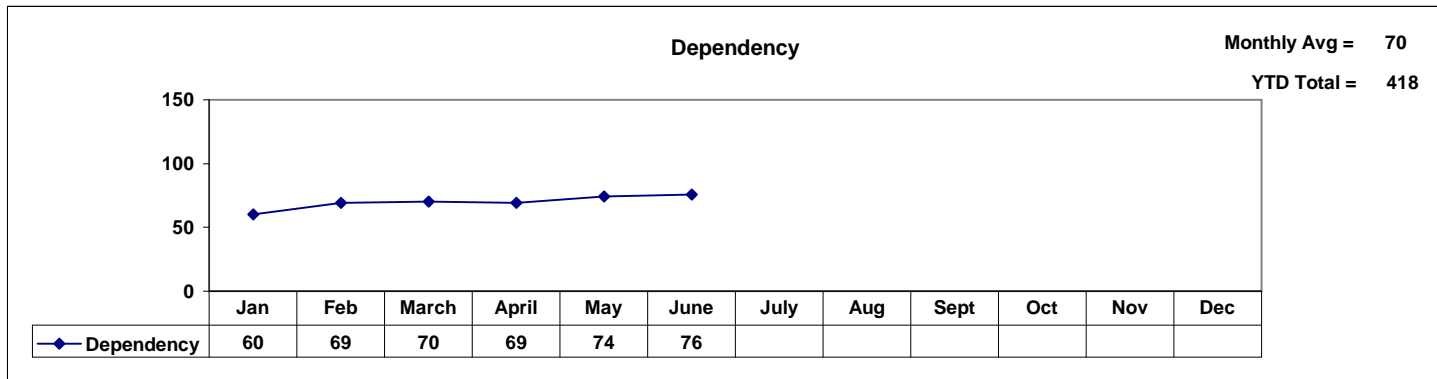
**Child Abuse & Neglect Intakes :  
Screened In Intakes By Allegation Type  
Month-to-Month : 2010**



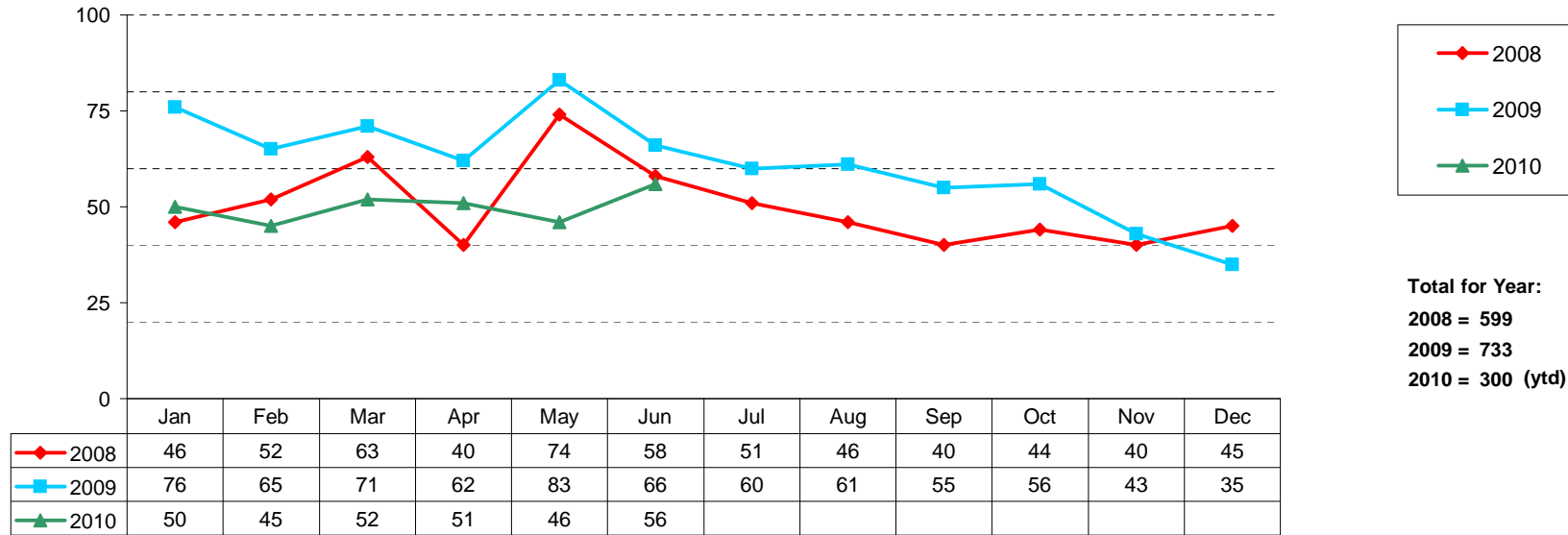
**Child Abuse & Neglect Intakes  
Screened In Intakes By Allegation Type  
Month-to-Month**



**Dependency & FINS Intakes  
Screened In Intakes  
Month-to-Month**



**POSITIVE TOX REFERRALS BY MONTH  
2008 THROUGH 2010**

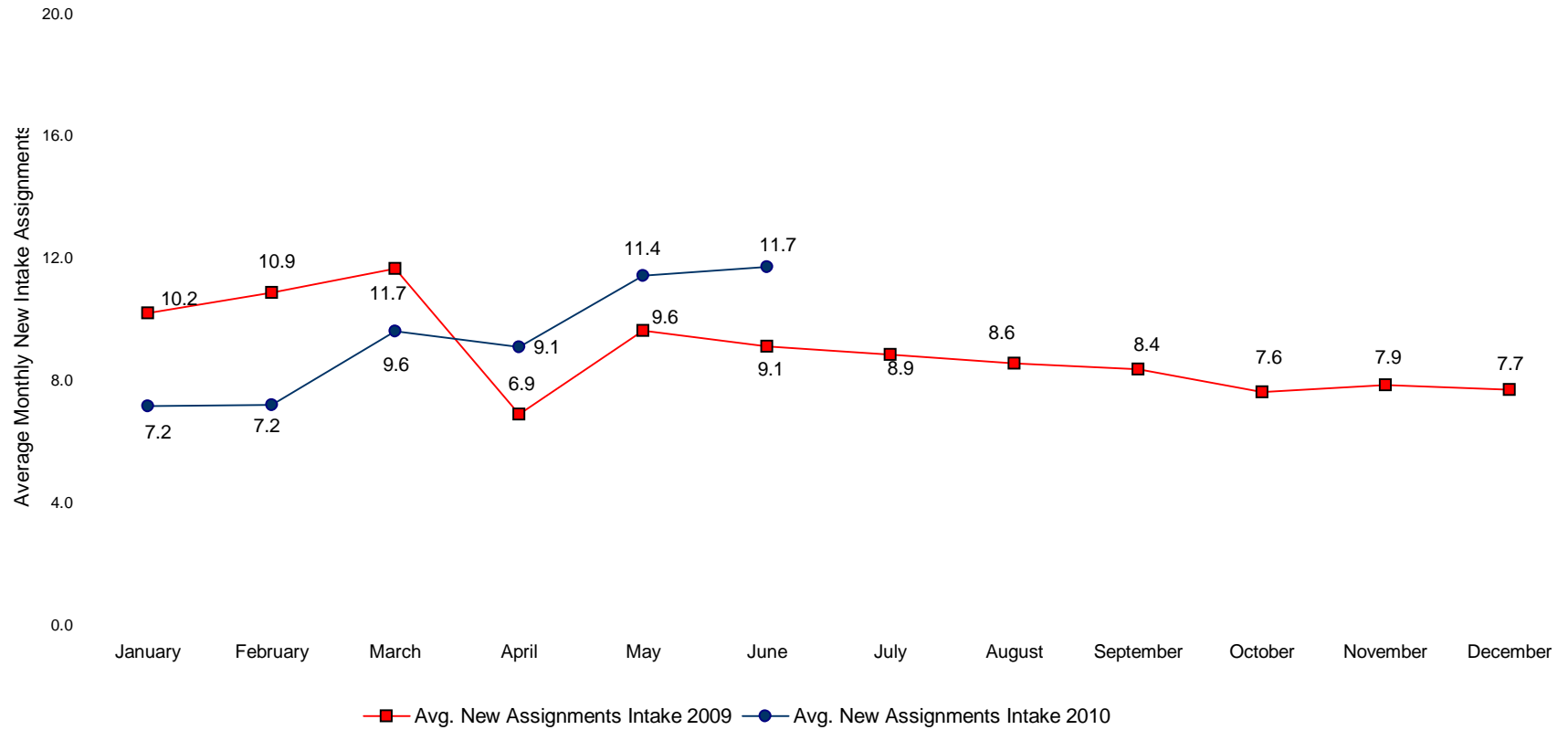


### AVERAGE MONTHLY NEW CASE ASSIGNMENTS - INTAKE UNITS End-Of-Month Figures Through 2009 and June 2010

Average New Monthly Case  
Assignments per Intake Social Worker  
during:

**2009:** 8.9 (ytd)

**2010:** 9.4 (ytd)

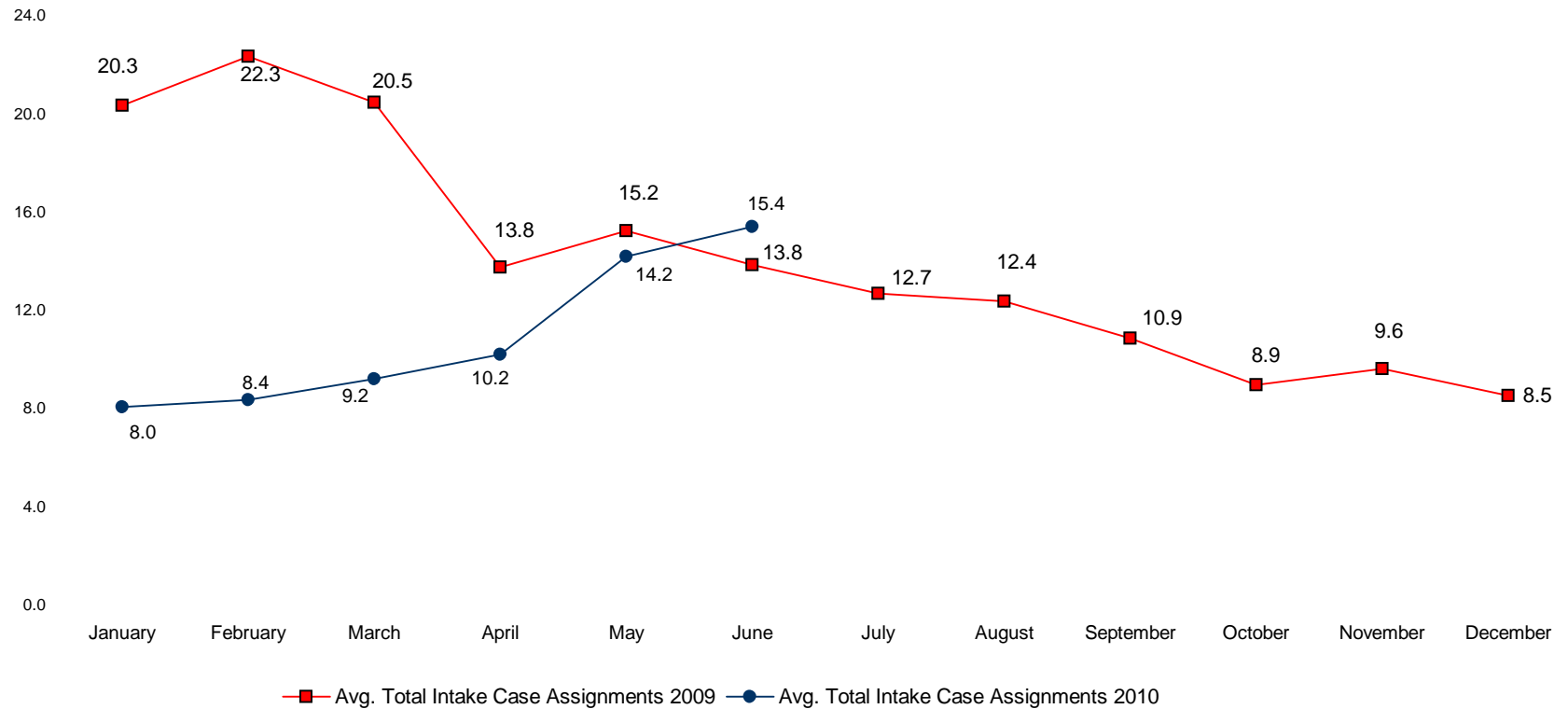


### AVERAGE TOTAL CASELOAD - INTAKE UNITS End-Of-Month Figures Through 2009 and June 2010

Avg. Case Assignments per Intake Social Worker during:

**2009:** 14.1(ytd)

**2010:** 10.9(ytd)



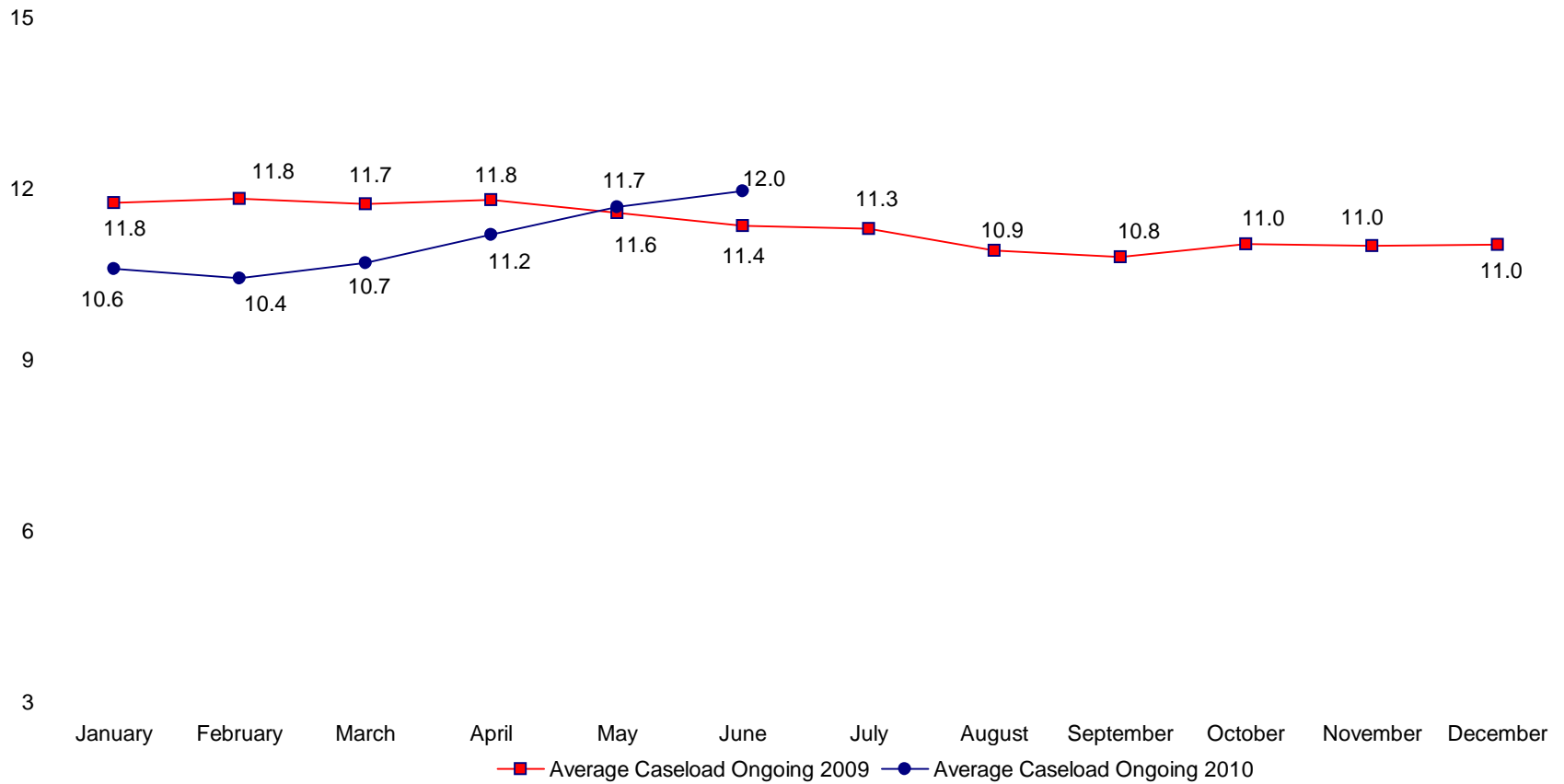
### AVERAGE TOTAL - CASELOAD ONGOING UNITS End-Of-Month Figures Through 2009 & June 2010

AVERAGE Caseload for Ongoing Social Workers during:

**2009** 11.3 (ytd)

**2010** 11.1 (ytd)

Note: Count includes START unit cases. Count does not include Ongoing Sex Abuse, SIU or MIU cases. For PC children assigned to Ongoing , each PC child counted as an individual case.

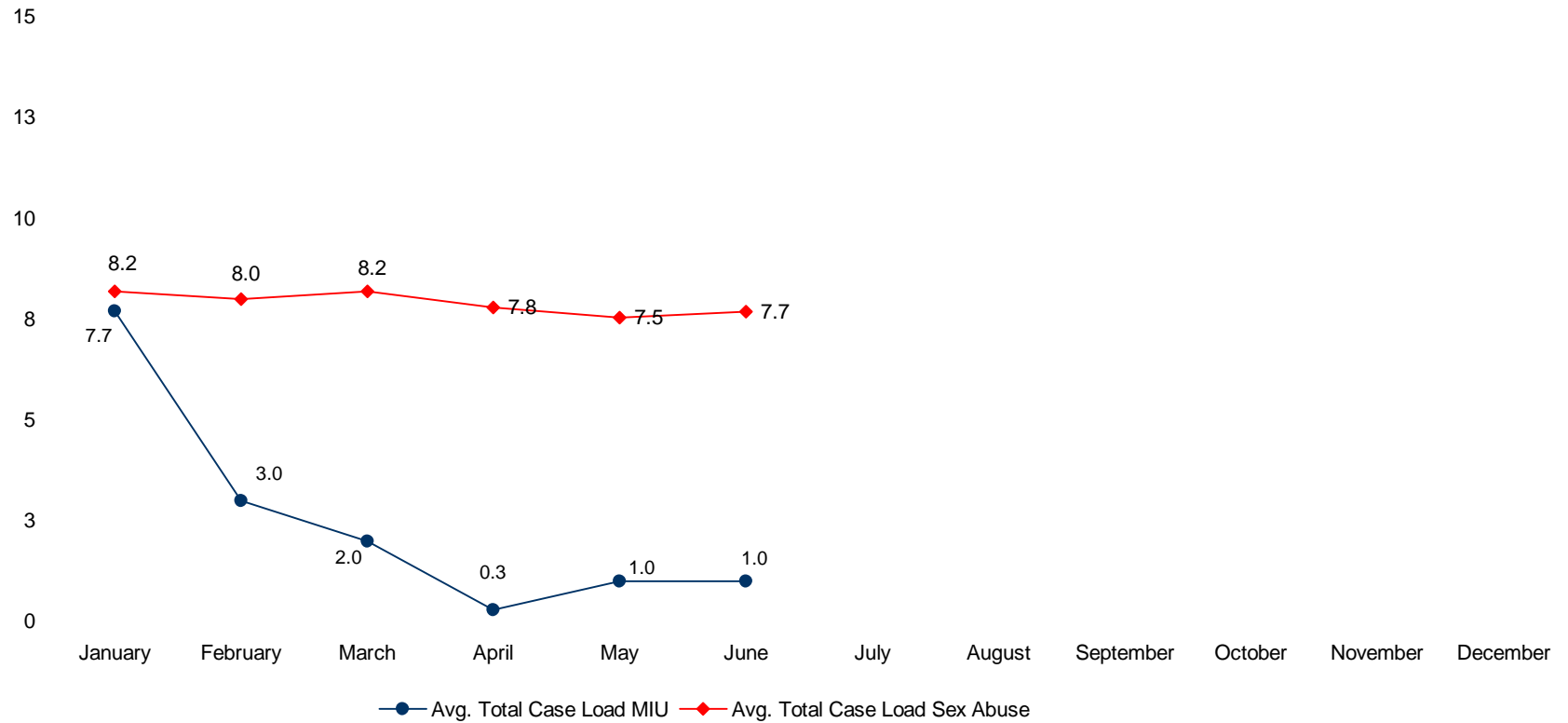


### AVERAGE TOTAL CASELOAD - MEDICAL INVESTIGATION UNIT (MIU) / SEX ABUSE UNIT End-Of-Month Figures Through 2009 and June 2010

Avg. Case Assignments For Specialized  
Units:

MIU = 2.5 (ytd)

Sex Abuse = 7.9 (ytd)

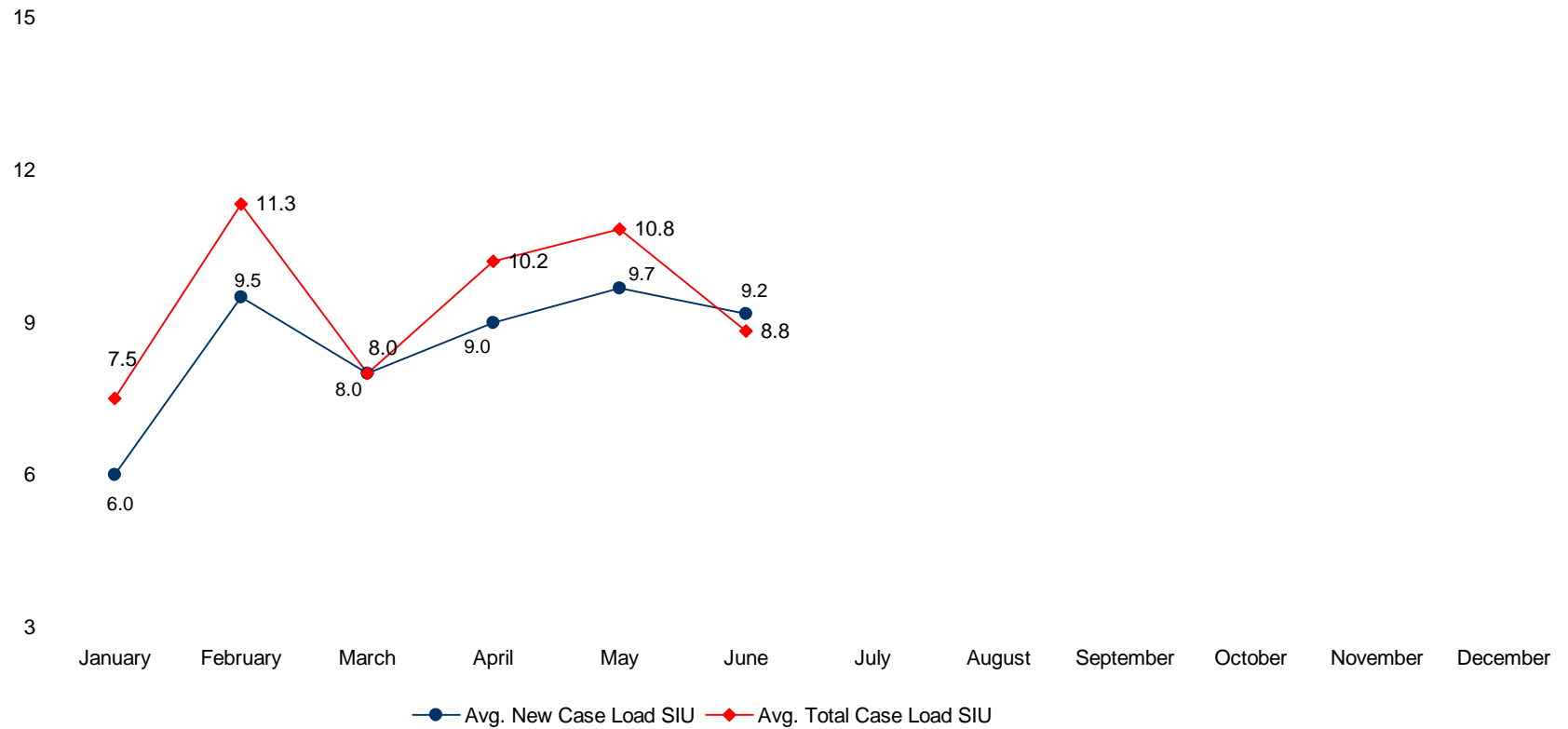


**AVERAGE NEW CASELOAD & TOTAL CASE LOAD SPECIAL INVESTIGATIONS UNIT**  
**End-Of-Month Figures**  
**June 2010**

Avg. Case Assignments For  
 SIU:

New case Load = 8.6 (ytd)

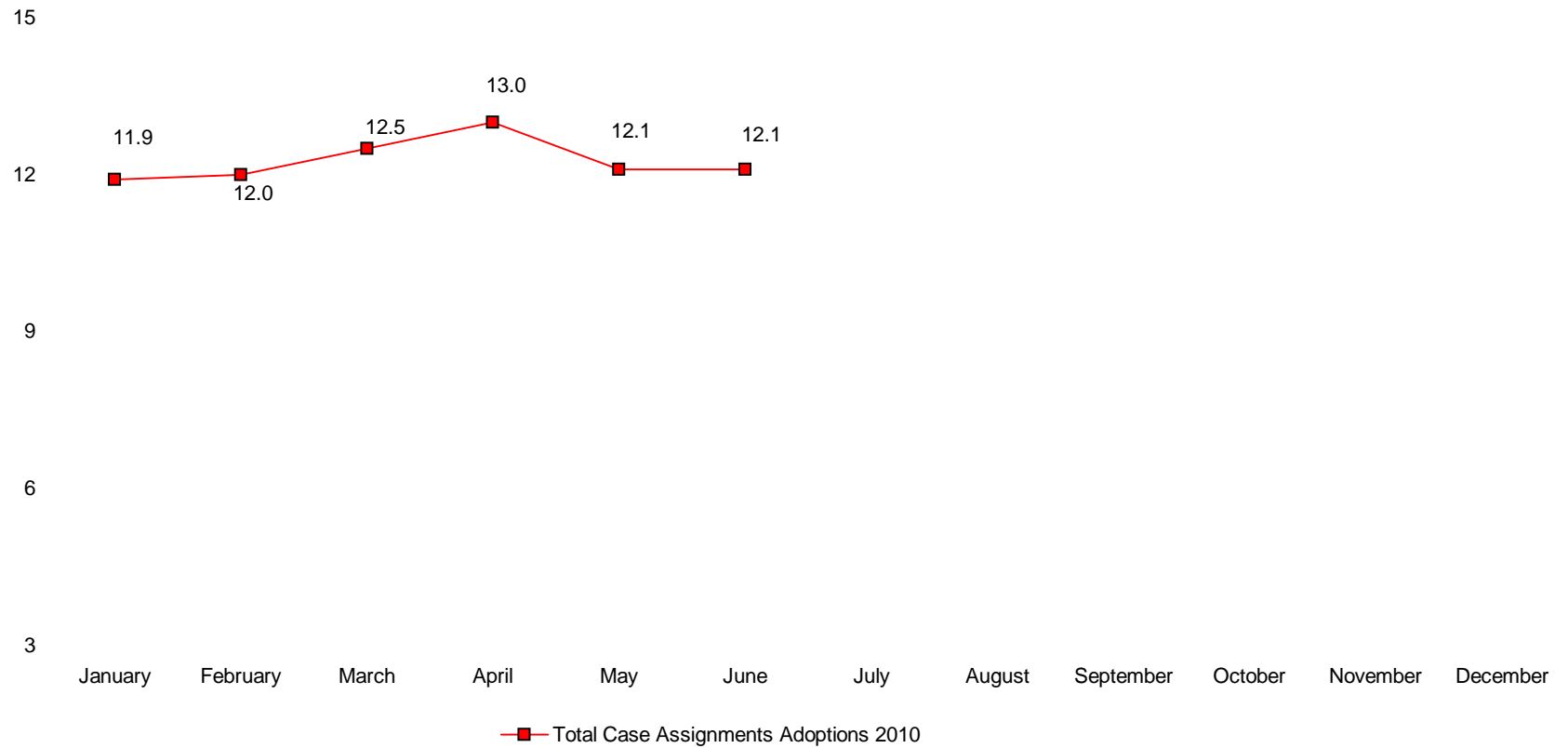
Total case Load = 9.4 (ytd)



### AVERAGE TOTAL CASELOAD - ADOPTIONS UNIT End-Of-Month Figures Through June 2010

avg. case assignments per adoptions  
social worker:

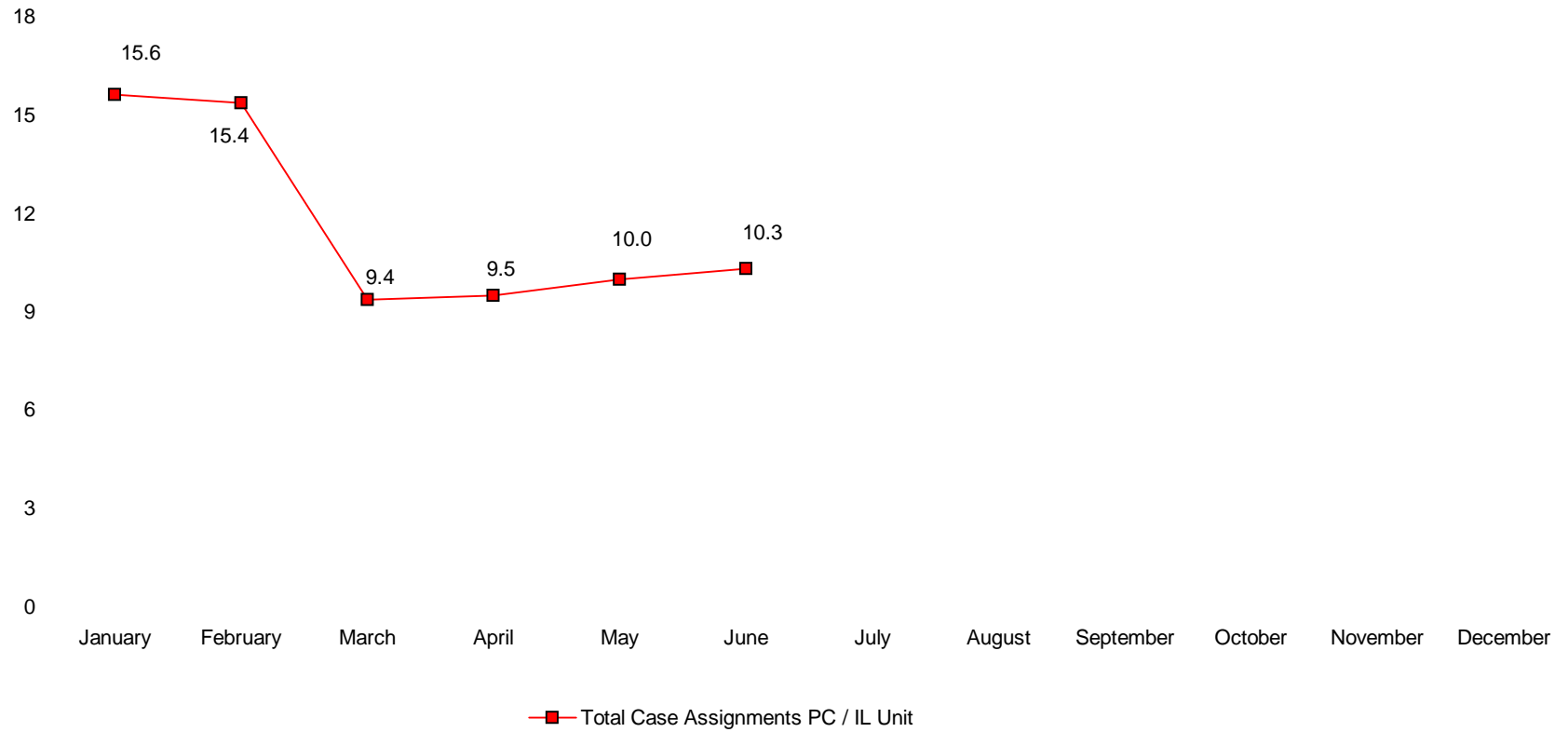
**2010:** 12.3 (ytd)



**AVERAGE TOTAL CASELOAD - PERMANENT CUSTODY  
INDEPENDENT LIVING  
End-Of-Month Figures June 2010**

Avg. Case Assignments per PC/IL unit  
social worker:

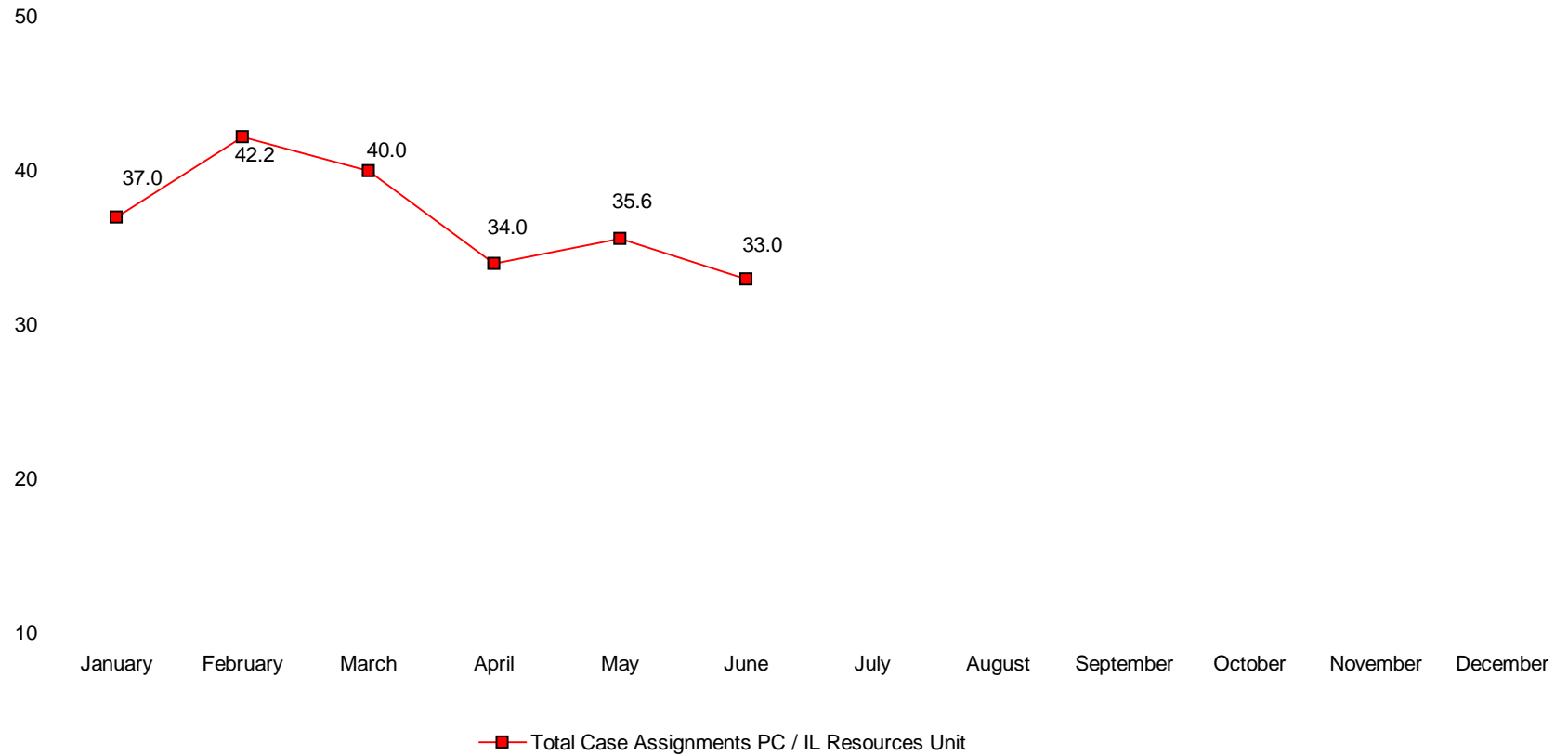
**2010:** 11.7 (ytd)



### AVERAGE TOTAL CASELOAD - INDEPENDENT LIVING RESOURCES UNIT End-Of-Month Figures June 2010

Avg. Case Assignments per IL  
Resources unit social worker:

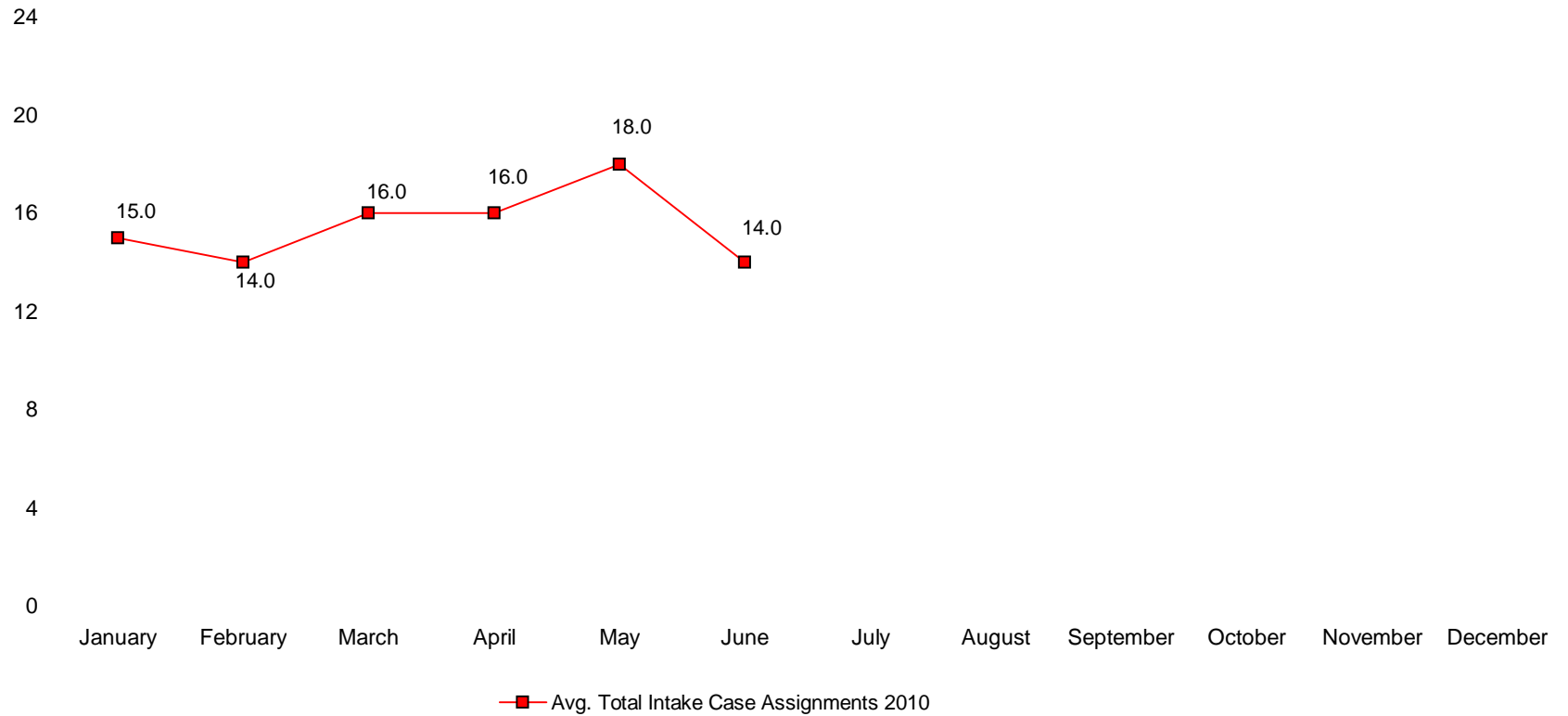
**2010:** 37.0 (ytd)



### AVERAGE TOTAL CASELOAD - FOSTER HOMES ONGOING UNIT End-Of-Month Figures June 2010

Avg. Case Assignments per foster homes ongoing unit social worker:

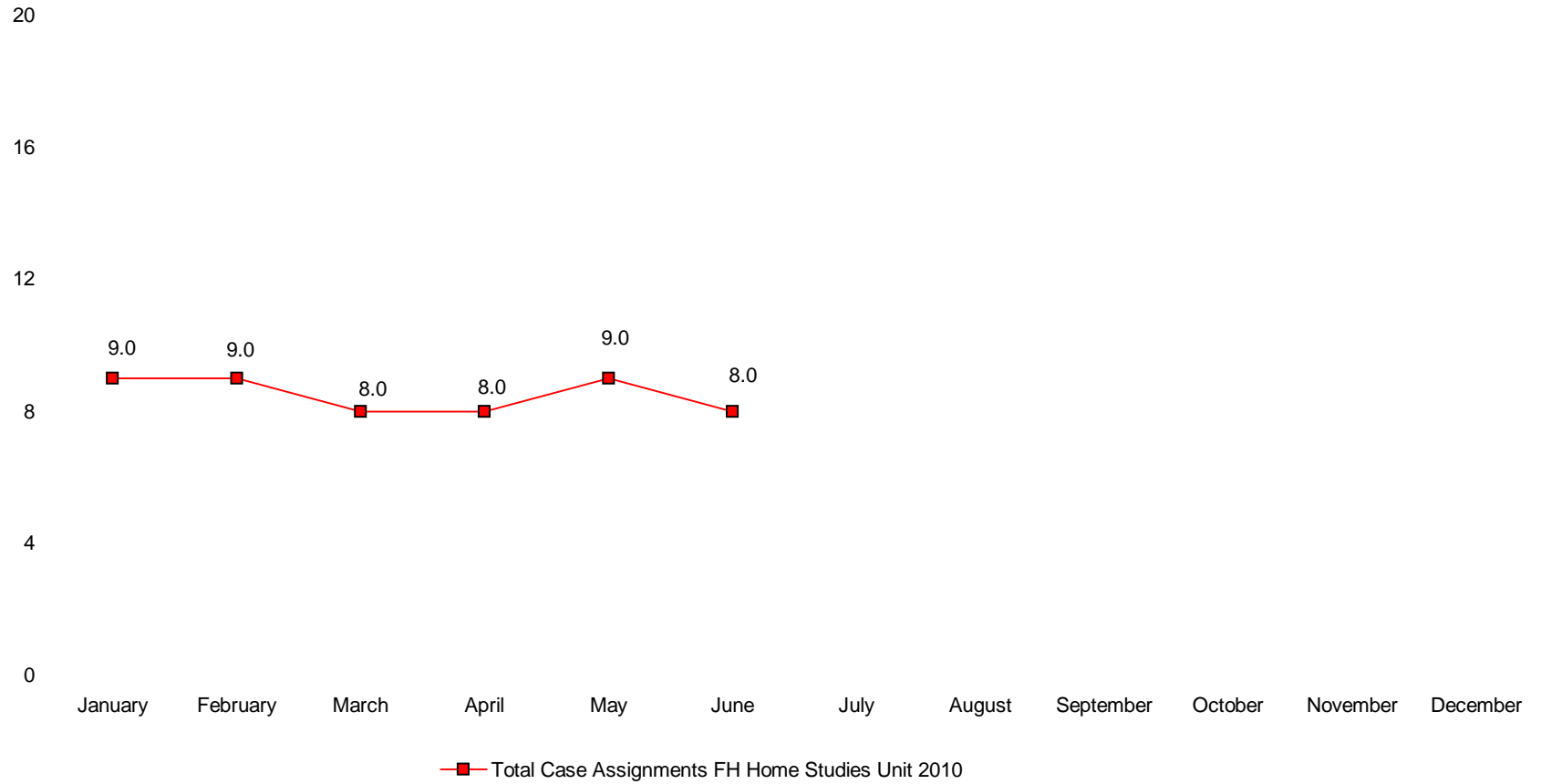
**2010:** 15.5 (ytd)



### TOTAL CASELOAD FOSTER HOMES - HOME STUDIES UNIT End-Of-Month Figures June 2010

Avg. Case Assignments per home studies unit social worker:

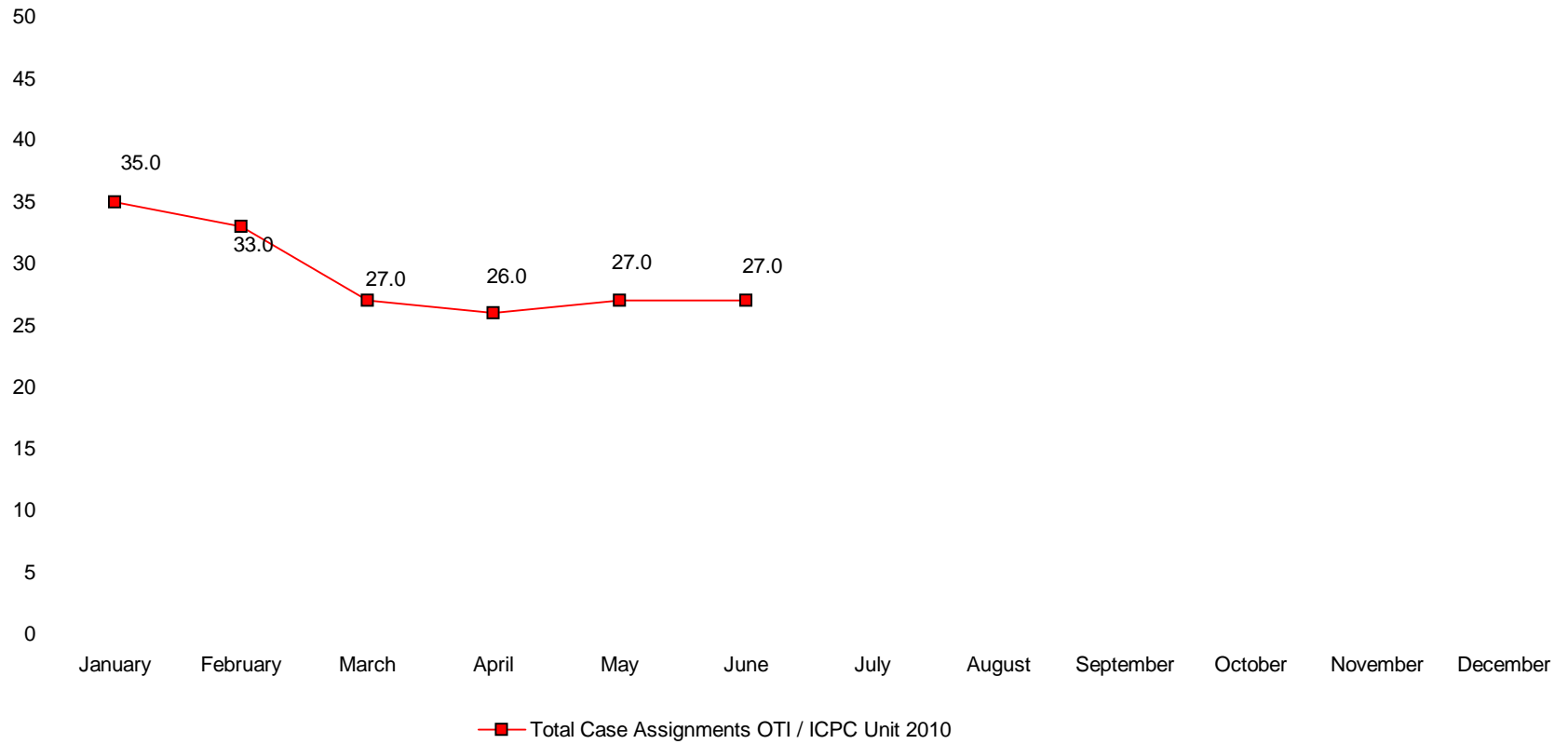
2010: 8.5 (ytd)



### AVERAGE TOTAL CASELOAD - INTERSTATE COMPACT UNIT End-Of-Month Figures June 2010

Avg. Case Assignments per foster homes resources  
OTI / ICPC unit social worker:

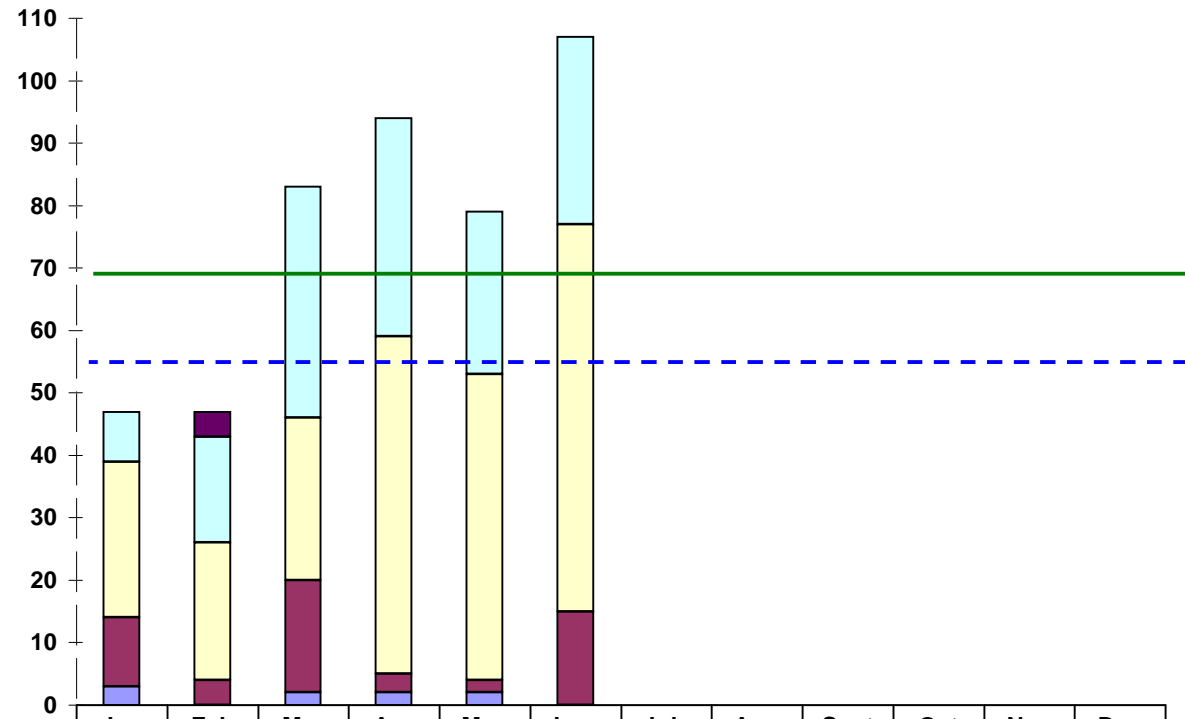
2010: 29.2 (ytd)



### Initial Custody Counts by Custody Type & Average Number of Initial Custodies Per Month for the Years 2009 and 2010

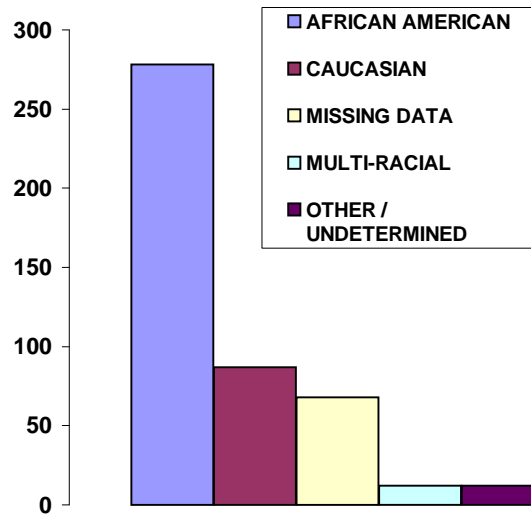
2009 Avg. Monthly Initial  
Custody Count = 56

2010 Avg. Monthly Initial  
Custody Count = 76 (ytd)

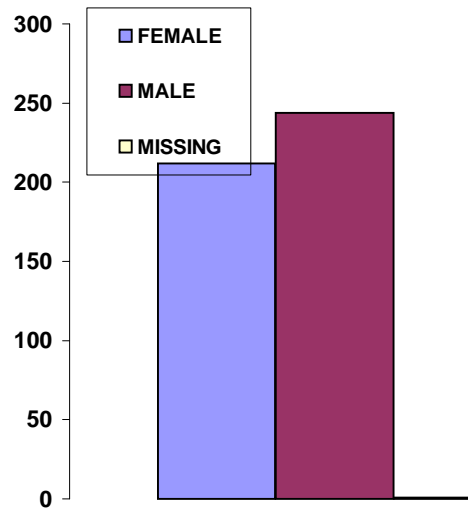


	Jan	Feb	Mar	Apr	May	June	July	Aug	Sept	Oct	Nov	Dec
■ AGENCY AUTHORITY	0	4	0	0	0	0						
□ EMERGENCY CUSTODY	8	17	37	35	26	30						
□ EX PARTE	25	22	26	54	49	62						
■ TEMPORARY CUSTODY	11	4	18	3	2	15						
■ OTHER	3	0	2	2	2	0						

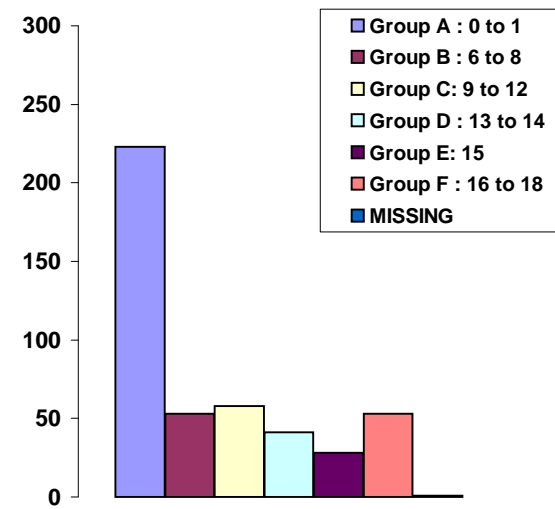
**CUSTODY ENTRIES BY  
RACE / GENDER / AGE  
YEAR-TO-DATE 2010**



Race	Count	% Of Total
African American	278	61%
Caucasian	87	19%
Missing Data	68	15%
Multi-Racial	12	3%
Other / Undetermined	12	2%
<b>Total</b>	<b>457</b>	<b>100%</b>



Gender	Count	% Of Total
Female	212	46%
Male	244	53%
Missing Data	1	1%
<b>Total</b>	<b>457</b>	<b>100%</b>

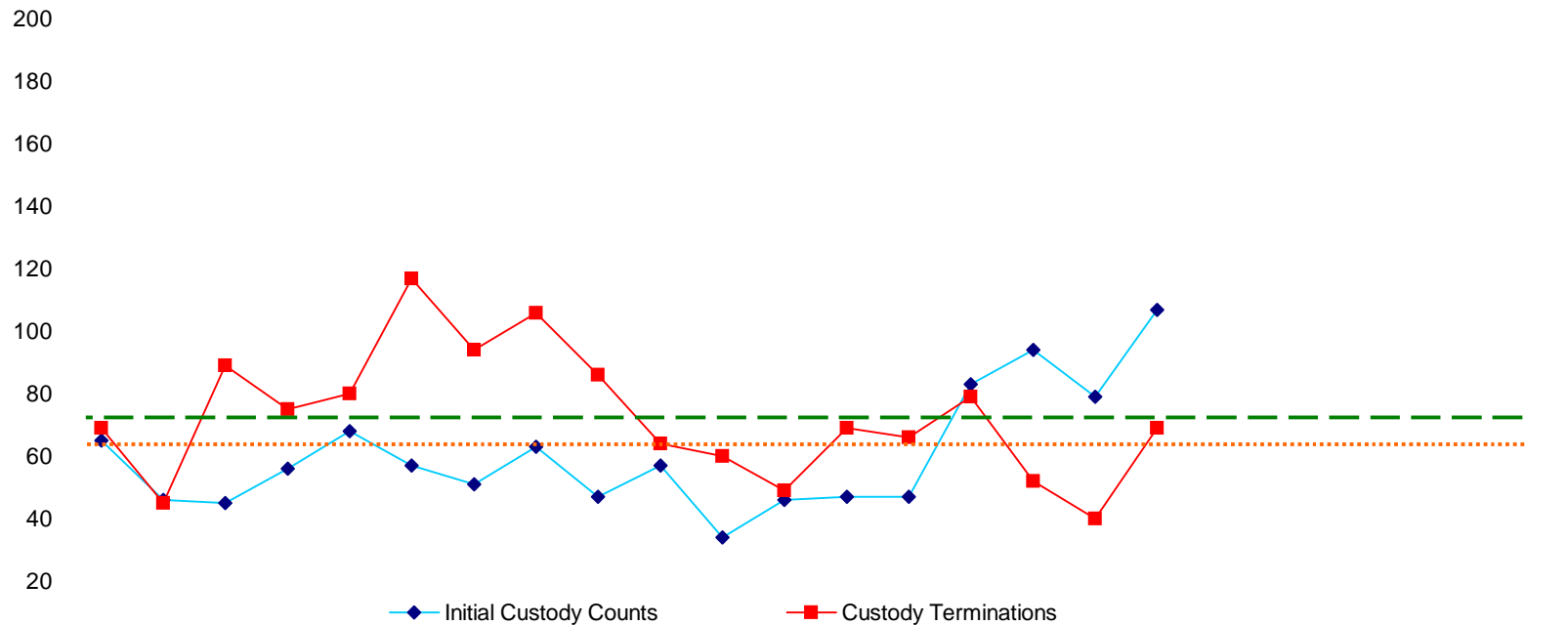


Age Group	Count	% Of Total
GROUP A : 0 to 5	223	49%
GROUP B : 6 to 8	53	12%
GROUP C : 9 to 12	58	13%
GROUP D : 13 to 14	41	9%
GROUP E : 15	28	6%
GROUP F : 16 to 18	53	12%
MISSING DATA:	1	0%
<b>Total</b>	<b>457</b>	<b>100%</b>

**INITIAL CUSTODY COUNTS compared to CUSTODY TERMINATIONS**  
 (Averages indicated by dotted and dashed lines)  
 Monthly Totals : 2009 and 2010

2009 Avg. # Monthly Custody Terminations = 76

2010 Avg. # Monthly Custody Terminations = 63



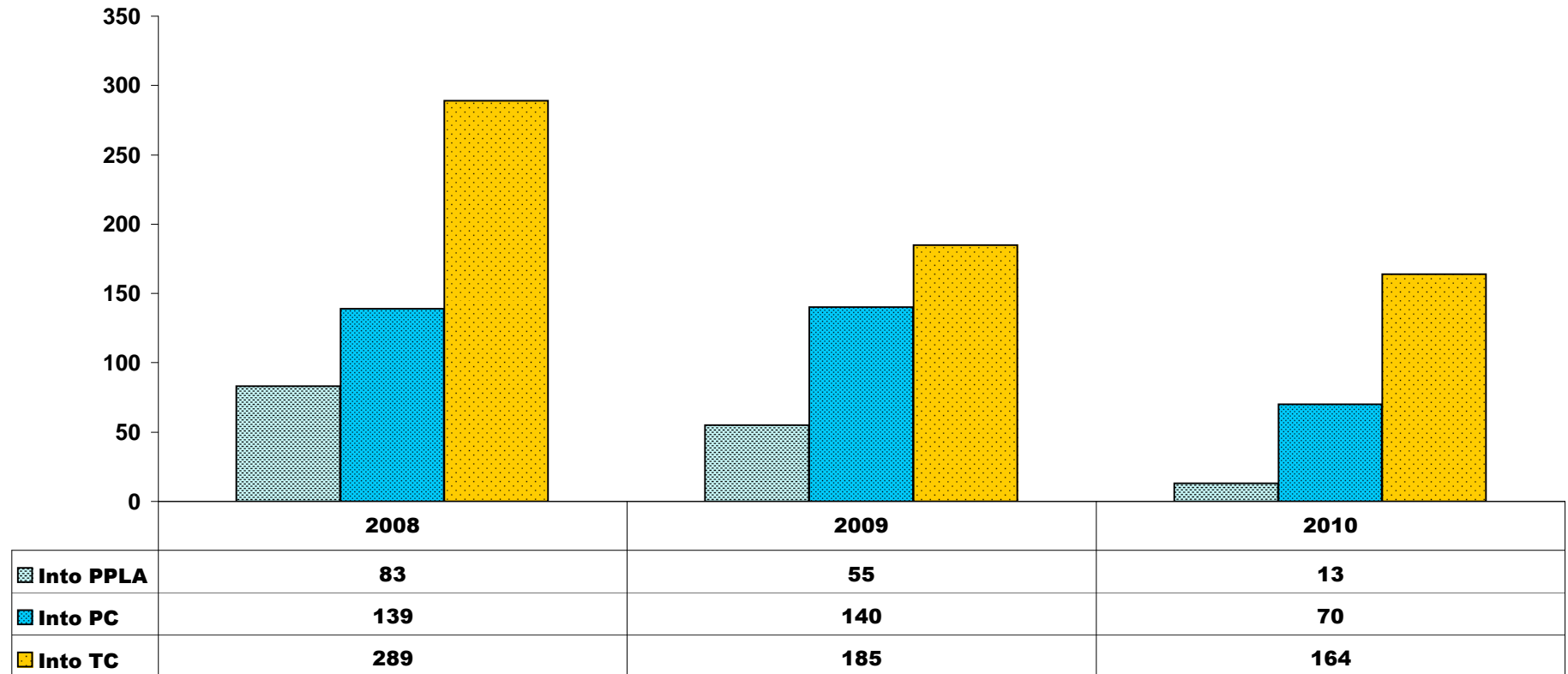
	Jan	Feb	Mar	Apr	May	June	July	Aug	Sept	Oct	Nov	Dec	Jan	Feb	Mar	Apr	May	June	July	Aug	Sept	Oct	Nov	Dec
◆ Initial Custody Counts	65	46	45	56	68	57	51	63	47	57	34	46	47	47	83	94	79	107						
■ Custody Terminations	69	45	89	75	80	117	94	106	86	64	60	49	69	66	79	52	40	69						

2009

2010

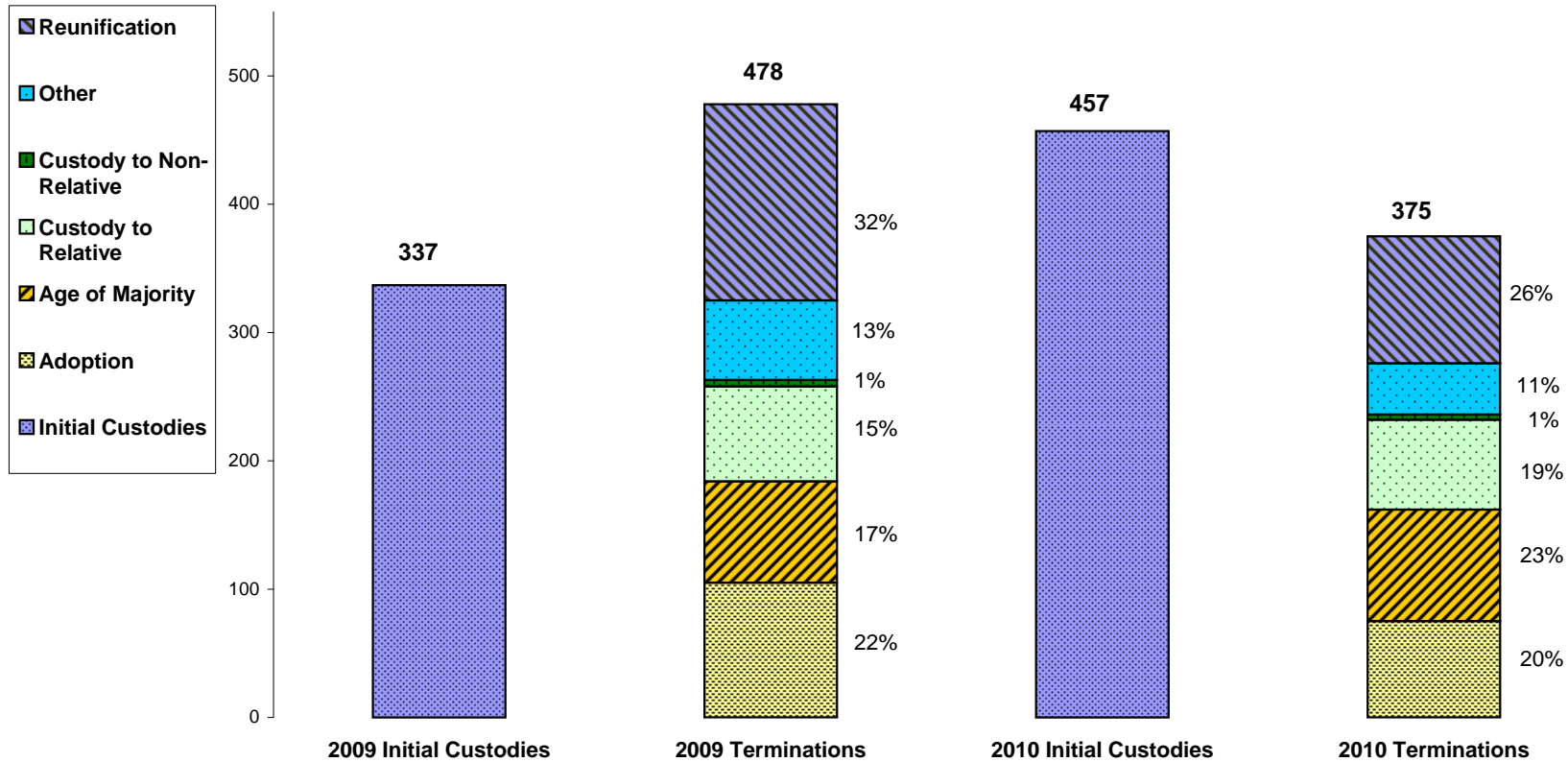
Because legal events may be entered after the end of the month - all previous months data for year 2010 are updated with each new report.

**CUSTODY TRANSITIONS**  
**Number of Children Coming INTO Planned Permanent Living Arrangement (PPLA)\* Custody Status, Permanent Custody Status (PC), or Temporary Custody Status (TC)**  
**Cumulative Measurements: Year-to-Date Totals Through June 2008, 2009 & 2010**



\*PPLA, formerly known as Long Term Foster Care

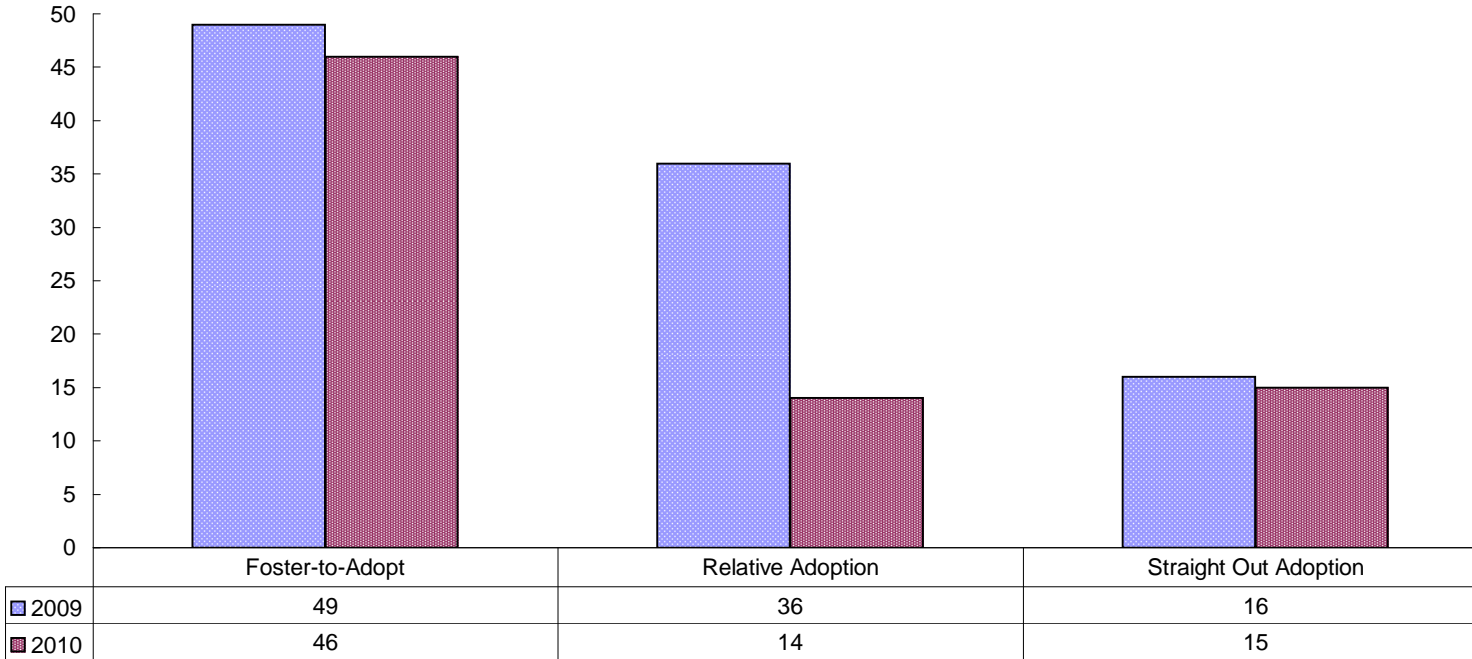
**CUSTODY TERMINATIONS BY TYPE**  
 Compared with the Year-To-Date Total Number of Initial Custodies  
 June 2009 and 2010



	Adoption	Age of Majority	Custody to Relative	Custody to Non-Relative	Other *	Reunification
<b>2009</b>	105	79	74	5	62	153
<b>2010</b>	75	87	70	4	40	99

\* Other includes court ordered, voluntary agreement expired, AWOL > 30 days, custody to ODYS, custody to guardian & child fatality.

**FINALIZED ADOPTIONS BY TYPE**  
**Year-To-Date Through June 2009 & 2010**



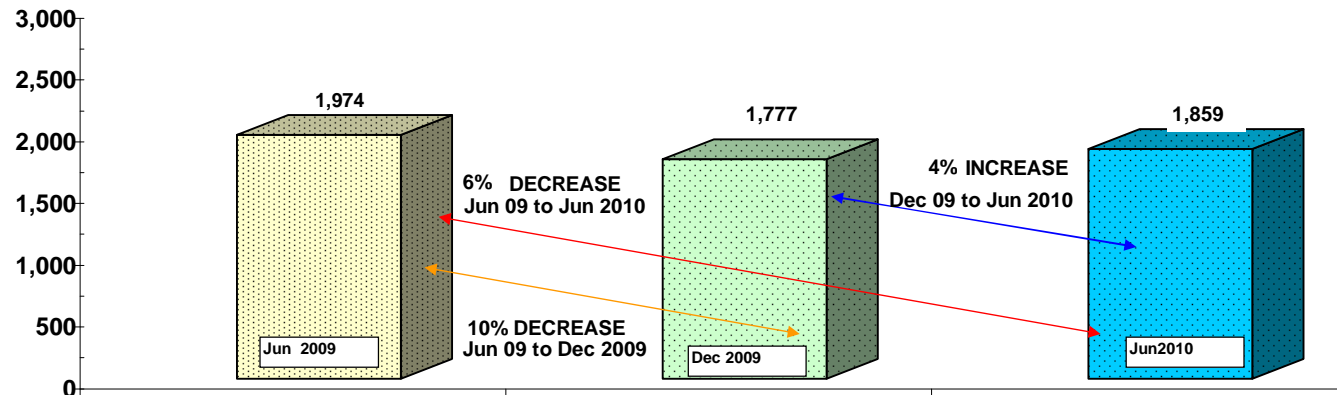
### CHILDREN IN PLACEMENT - BY PLACEMENT TYPE

Current Month & Previous Six Months  
 Point-In-Time Measures (at End of Each Month):  
 December 2009 through June 2010

Month / Yr	Relative Home Count	% of Total	Agency Foster Home Count	% of Total	Network / Shared Foster Home Count	% of Total	Adoptive Home	% of Total	Congregate Care	% of Total	Other	% of Total	Total # In Placement
Dec-09	207	12%	359	20%	820	46%	96	5%	230	13%	65	4%	1,777
Jan-10	204	11%	337	19%	827	47%	87	5%	244	14%	76	4%	1,775
Feb-10	197	11%	335	19%	823	47%	86	5%	235	13%	88	5%	1,764
Mar-10	204	12%	335	19%	817	46%	84	5%	232	13%	91	5%	1,763
Apr-10	203	11%	338	19%	847	47%	94	5%	243	13%	94	5%	1,819
May-10	214	12%	353	19%	862	47%	84	5%	240	13%	89	4%	1,842
Jun-10	229	12%	366	20%	855	46%	80	4%	222	12%	107	6%	1,859

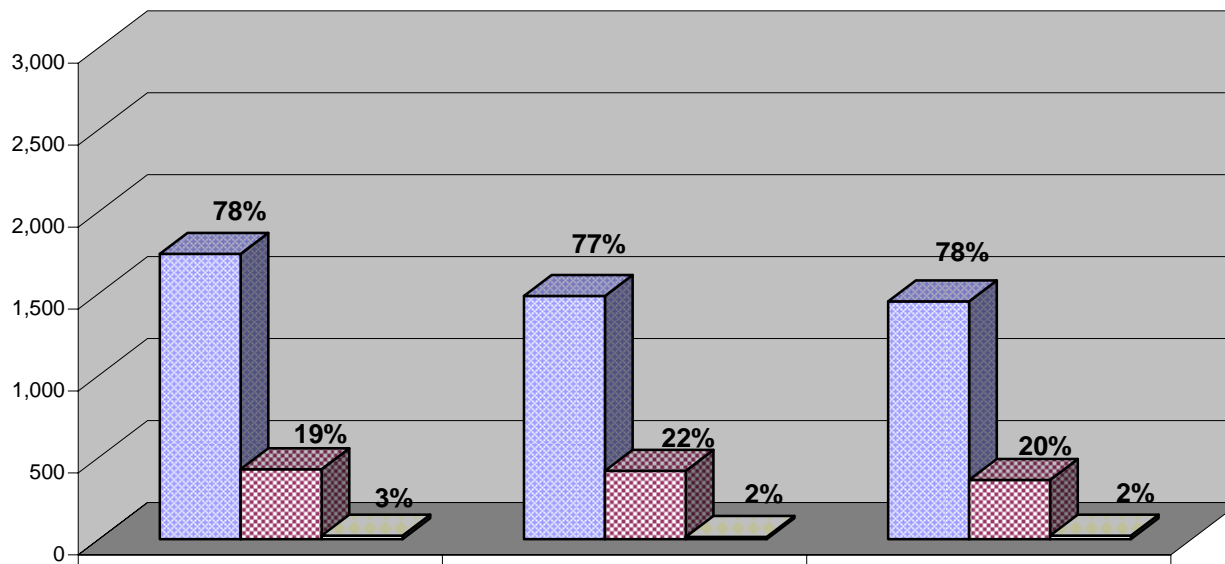
### TOTAL NUMBER OF CHILDREN IN PLACEMENT

Point in Time Measures at End of Month for June 2009 / Dec 2009 / June 2010



Congregate Care includes Group Homes and Certified Residential Facilities. "Other" includes Detention Facilities, Independent Living, Hospital and all other placements. In February 2009 the data source for this report was switched from FACTS to SACWIS even while placement data is temporarily being stored across multiple systems. Because data is stored in multiple systems and for this report may not always be reconciled - these figures may change as SACWIS is updated. Additionally, reports prior to February 2009 would include children in placements monitored by DCFS that were court custody children - those placements are not linked to DCFS in SACWIS and are not counted. Count is of all children in open placements regardless of custody status.

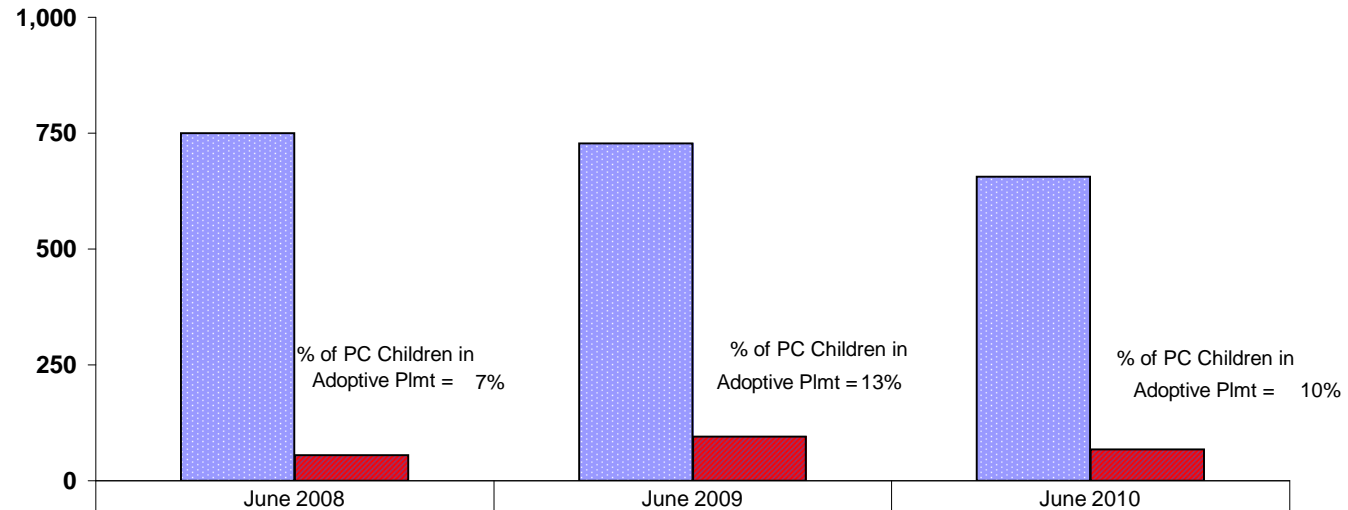
### IN COUNTY , OUT OF COUNTY AND OUT OF STATE PLACEMENTS Point-In-Time Counts At End Of Jun 2008, 2009 & 2010



	2008	2009	2010
<span style="color: blue;">■</span> In County	1,741	1,484	1,451
<span style="color: red;">■</span> Out of Cnty. But In Ohio	427	417	361
<span style="color: yellow;">■</span> Out of State	21	14	21

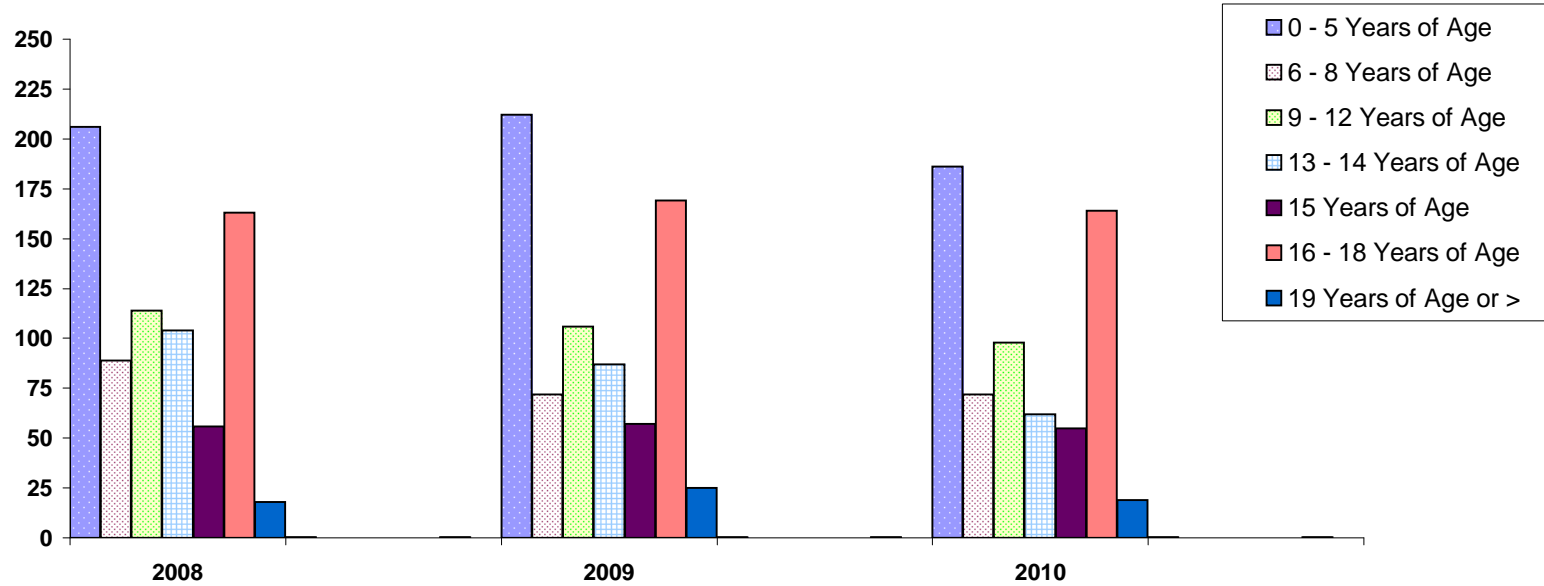
Missing or unvalidated address data: 2008 = 35 ; 2009 = 21; 2010 = 26 ;

**CHILDREN IN PERMANENT CUSTODY and ADOPTIVE PLACEMENTS**  
**Point-in-Time Measure at End of Month : June 2008, 2009 & 2010**



	June 2008	June 2009	June 2010
Children in PC	750	728	656
Children in PC and in Adoptive Placements	55	95	67

**CHILDREN IN PERMANENT CUSTODY BY AGE**  
**Point-in-Time Measure at End of June 2008, 2009 & 2010**



	2008		2009		2010	
	Count	% of PC Children	Count	% of PC Children	Count	% of PC Children
0 - 5 Years of Age	206	27%	212	29%	186	28%
6 - 8 Years of Age	89	12%	72	10%	72	11%
9 - 12 Years of Age	114	15%	106	15%	98	15%
13 - 14 Years of Age	104	14%	87	12%	62	9%
15 Years of Age	56	7%	57	8%	55	8%
16 - 18 Years of Age	163	22%	169	23%	164	25%
19 Years of Age or >	18	2%	25	3%	19	3%
<b>Total</b>	<b>750</b>	<b>100%</b>	<b>728</b>	<b>100%</b>	<b>656</b>	<b>100%</b>

\* Count includes children who were in open permanent custody or permanent surrender custody status and who were in placement on last day of month

**Total # of Children Exiting Custody by Emancipation / Age of Majority  
By Final Custody Type  
January - December 2010**

<b>Month</b>	<b>Permanent Commitment</b>	<b>PPLA</b>	<b>Other</b>	<b>Total # Children Exiting by Emancipation For Month</b>
January	4	6	3	13
February	5	7	1	13
March	3	14	1	18
April	5	4	1	10
May	2	7	2	11
June	11	9	2	22
July				0
August				0
September				0
October				0
November				0
December				0
<b>YTD Total</b>	<b>30</b>	<b>47</b>	<b>10</b>	<b>87</b>

\* Number of children exiting by age of majority in 2009 = 209

**Age of Children Who Exited by Emancipation  
At the Time Custody Episode Began**

<b>Age at Custody Start</b>	<b>Count</b>
Under Age 12	12
Age 12 to 16	54
Age 17 or Older	21

NOTE: count for past months is updated with each new report as SACWIS historical data may change - this may cause past months data to differ from those in previous versions of this report.